

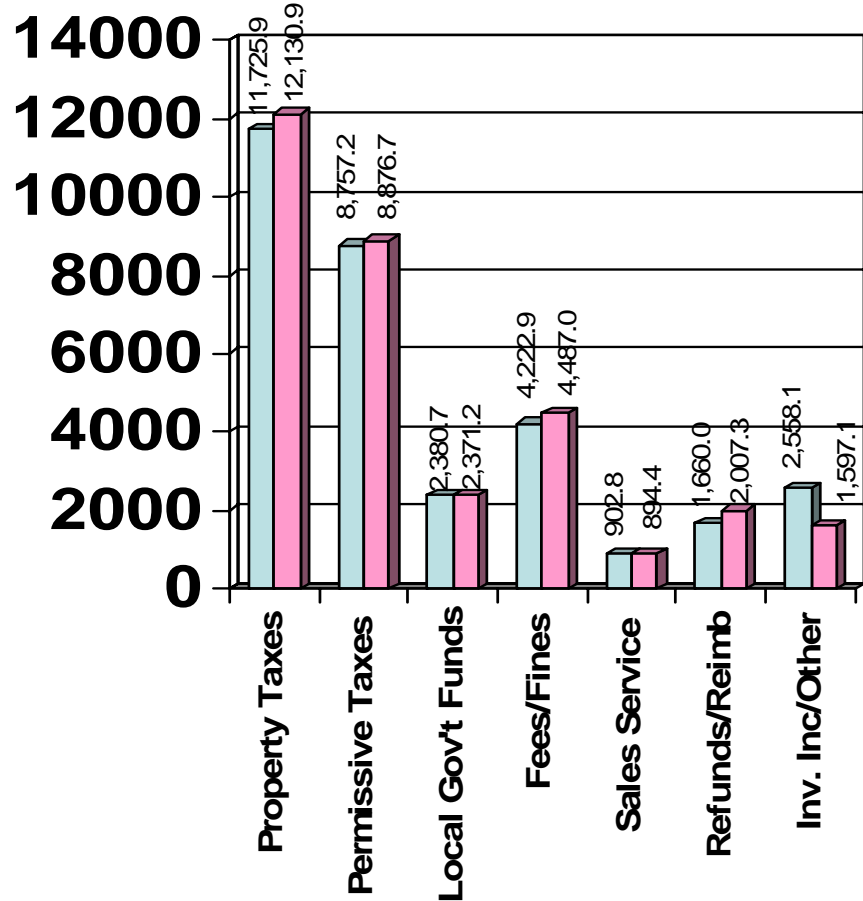
# MEDINA COUNTY GENERAL FUND FINANCIAL STATUS AS OF NOV. 30, 2010



# Revenue vs. Budget

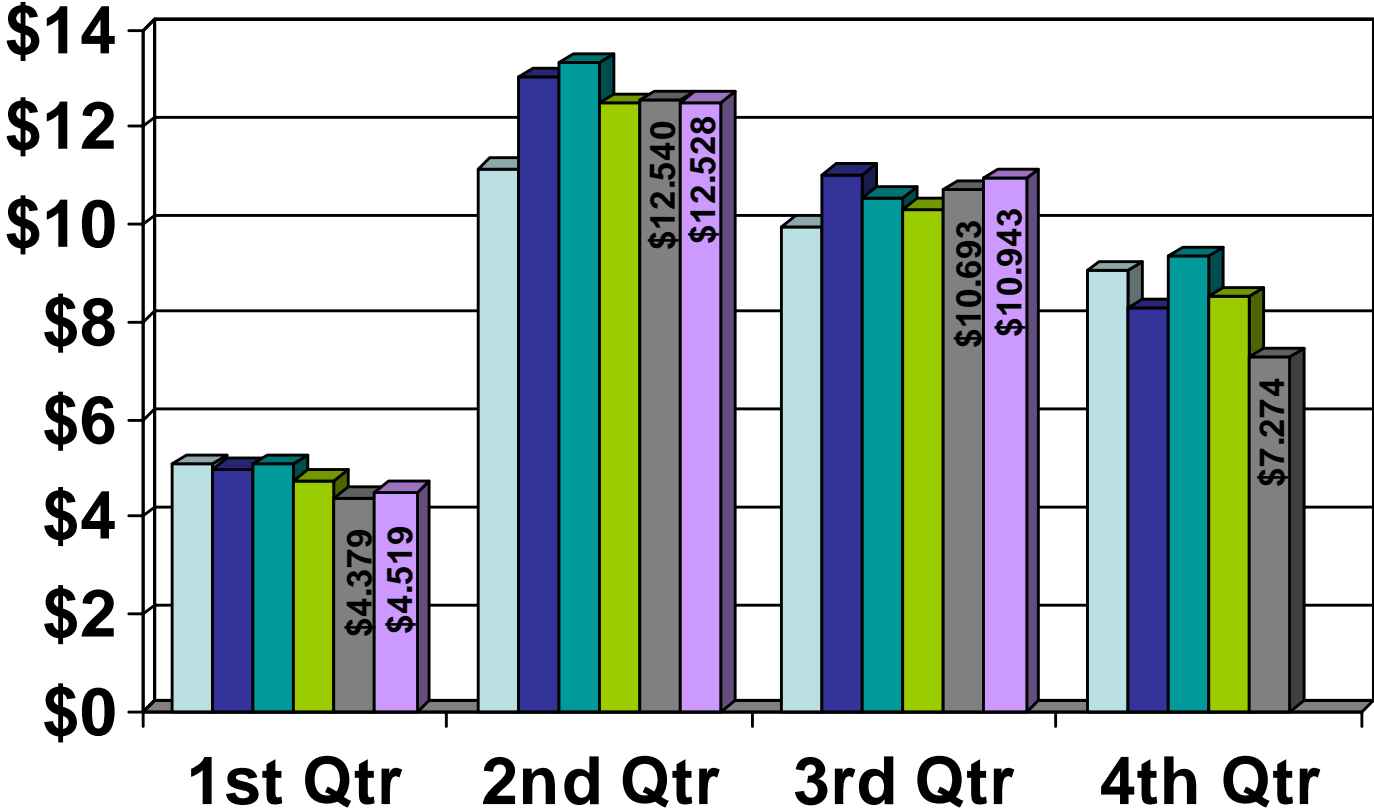
Revenue	Estimated % Annual Change CY 09 – CY 10	Actual % Change Jan – Nov. 09 vs. Jan – Nov. 10
Property Taxes*	1.02%	3.46%
Permissive Taxes	3.29%	1.37%
Local Gov't Funds	0.00%	-.40%
Fees/Fines*	3.35%	6.25%
Sales/Service	-.89%	-.93%
Refunds/Reimb	-2.08%	20.92%
Inv. Inc/Other	-25.20%	-37.57%
* Adjusted for timing differences		

Thousands



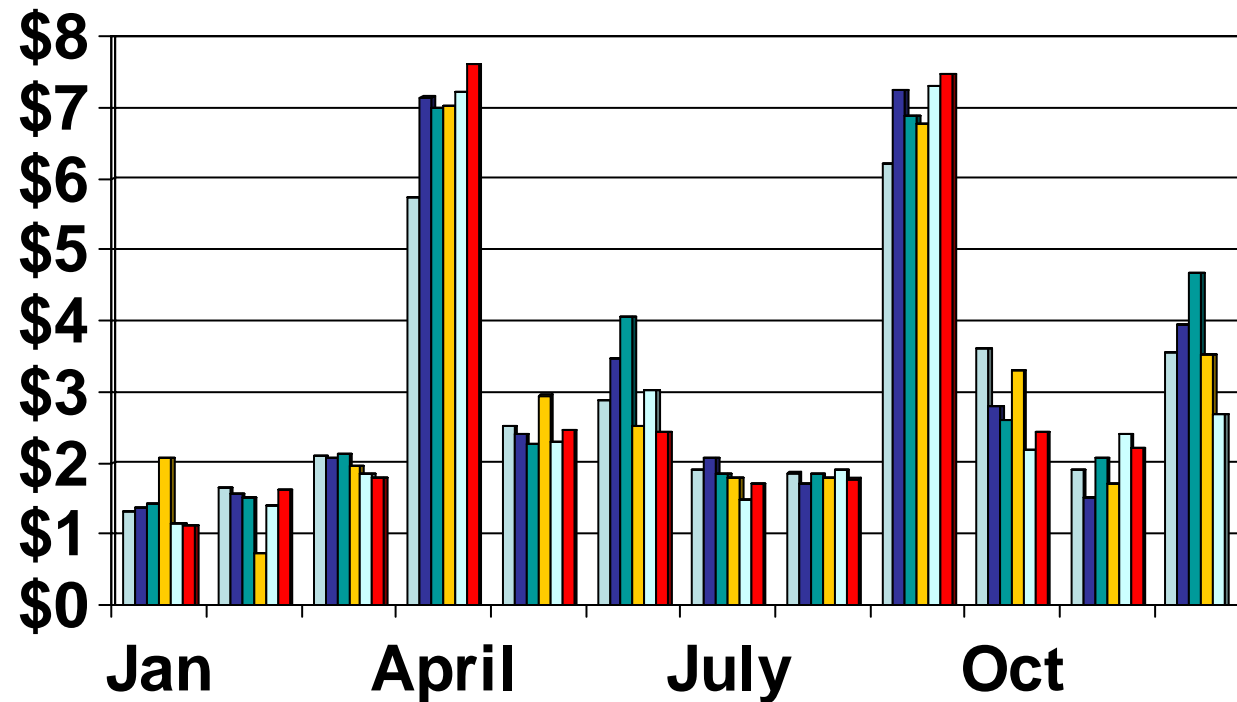
# Quarterly Revenues

Millions



# 5 YEAR REVENUE COMPARISON BY MONTH

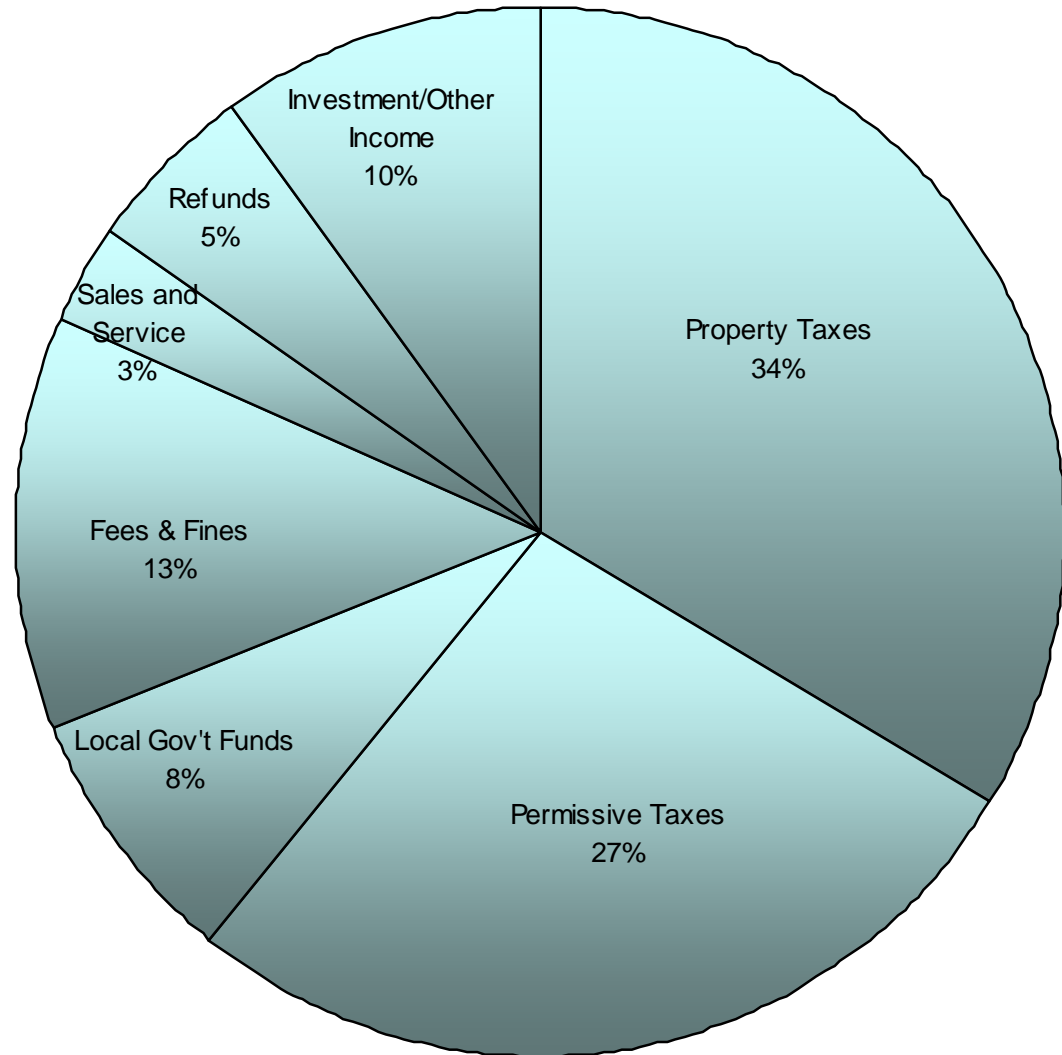
Millions



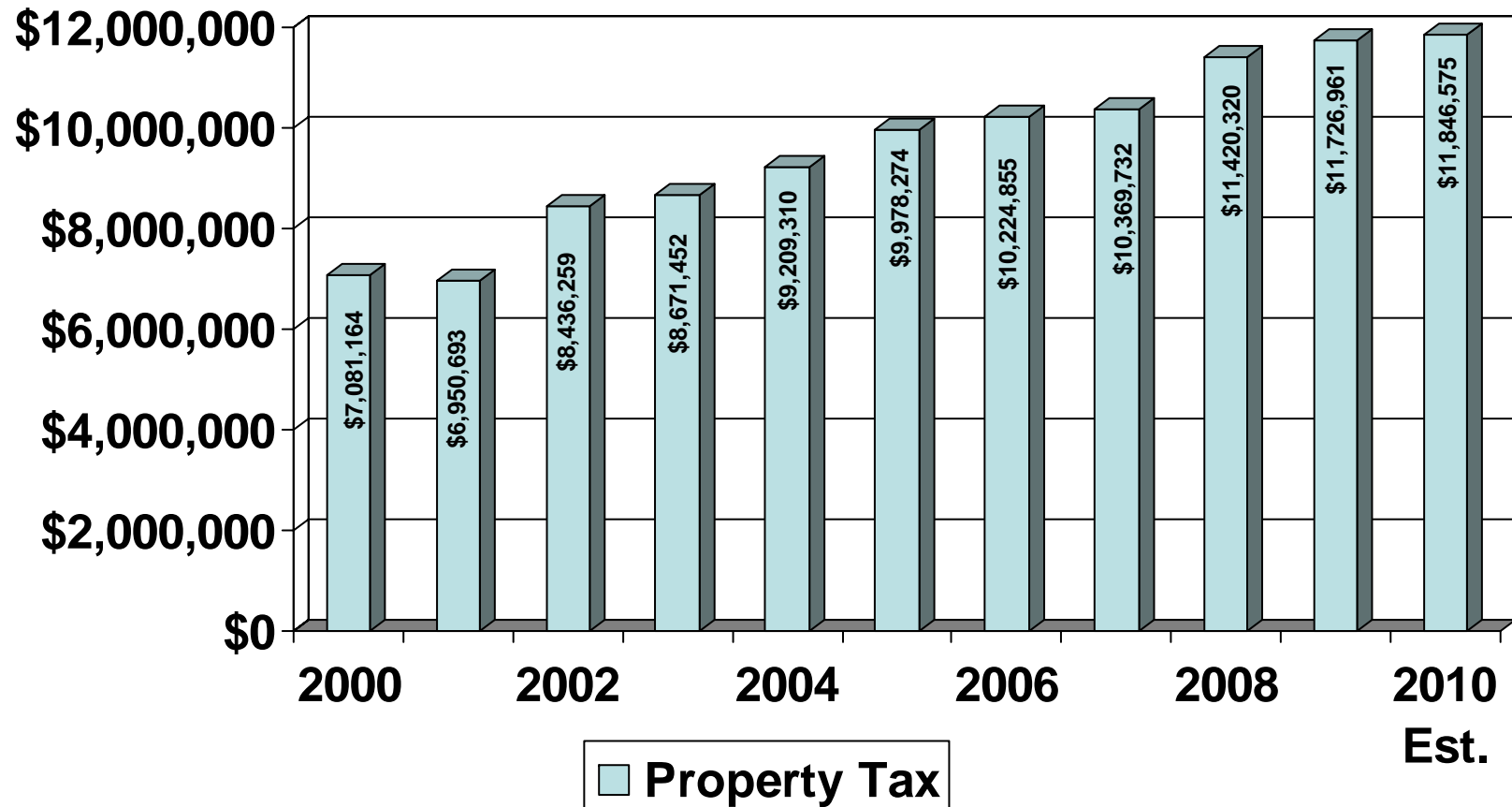
Please note that Property Tax and related revenues are adjusted for timing differences. \$5.32 million in property tax and related revenue was received in August, but will be shown as revenue collected in September in order to reflect revenues consistently from year to year.

# 2009 General Fund Revenues

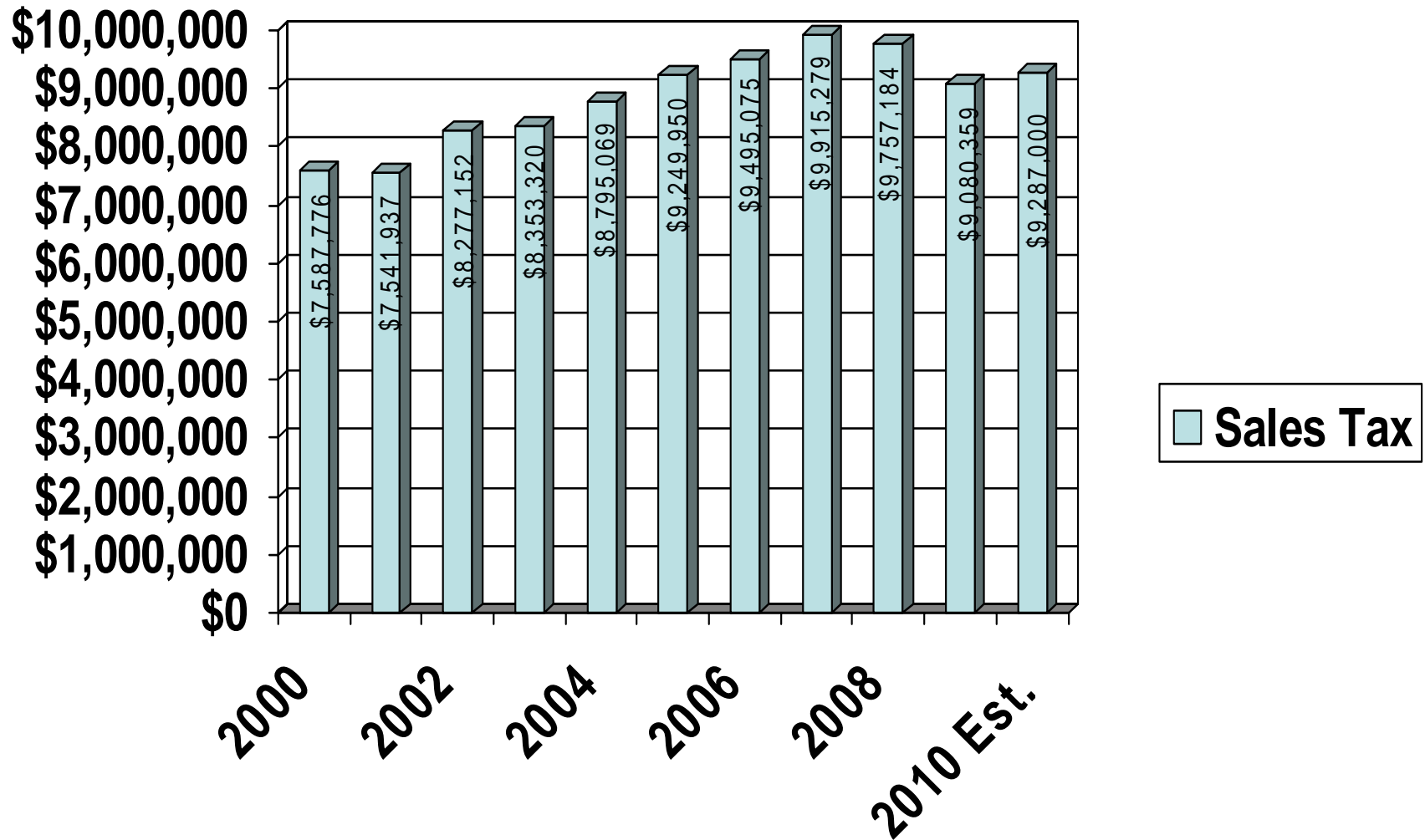
	2009 Revenues
Property Taxes	\$11,726,961
Permissive Taxes	\$9,528,875
Local Gov't Funds	\$2,793,600
Fees and Fines	\$4,470,409
Sales & Service	\$1,032,693
Refunds	\$1,838,232
Investment/Other Income	\$3,494,420



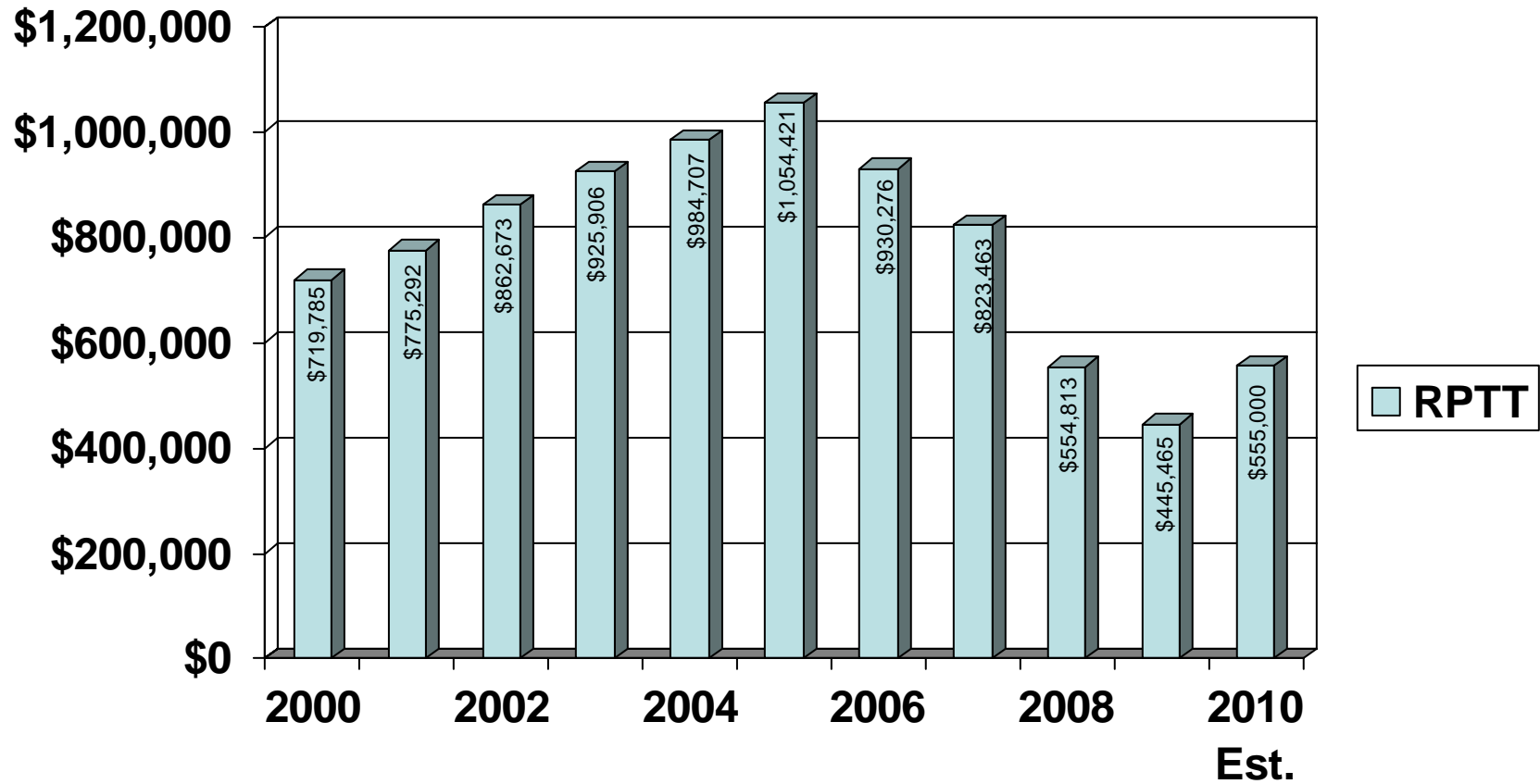
# Property Tax Revenue



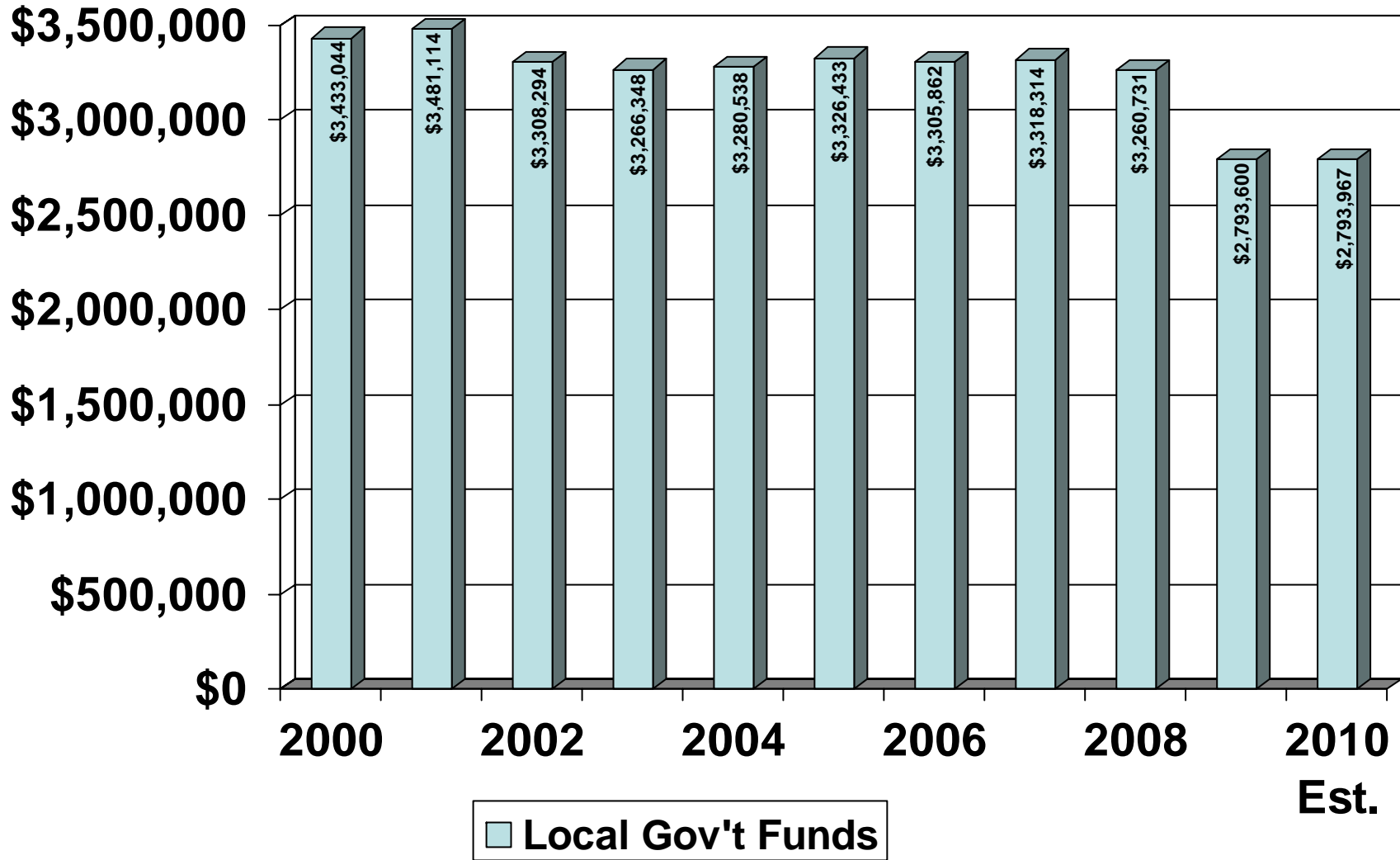
# Sales Tax Revenue



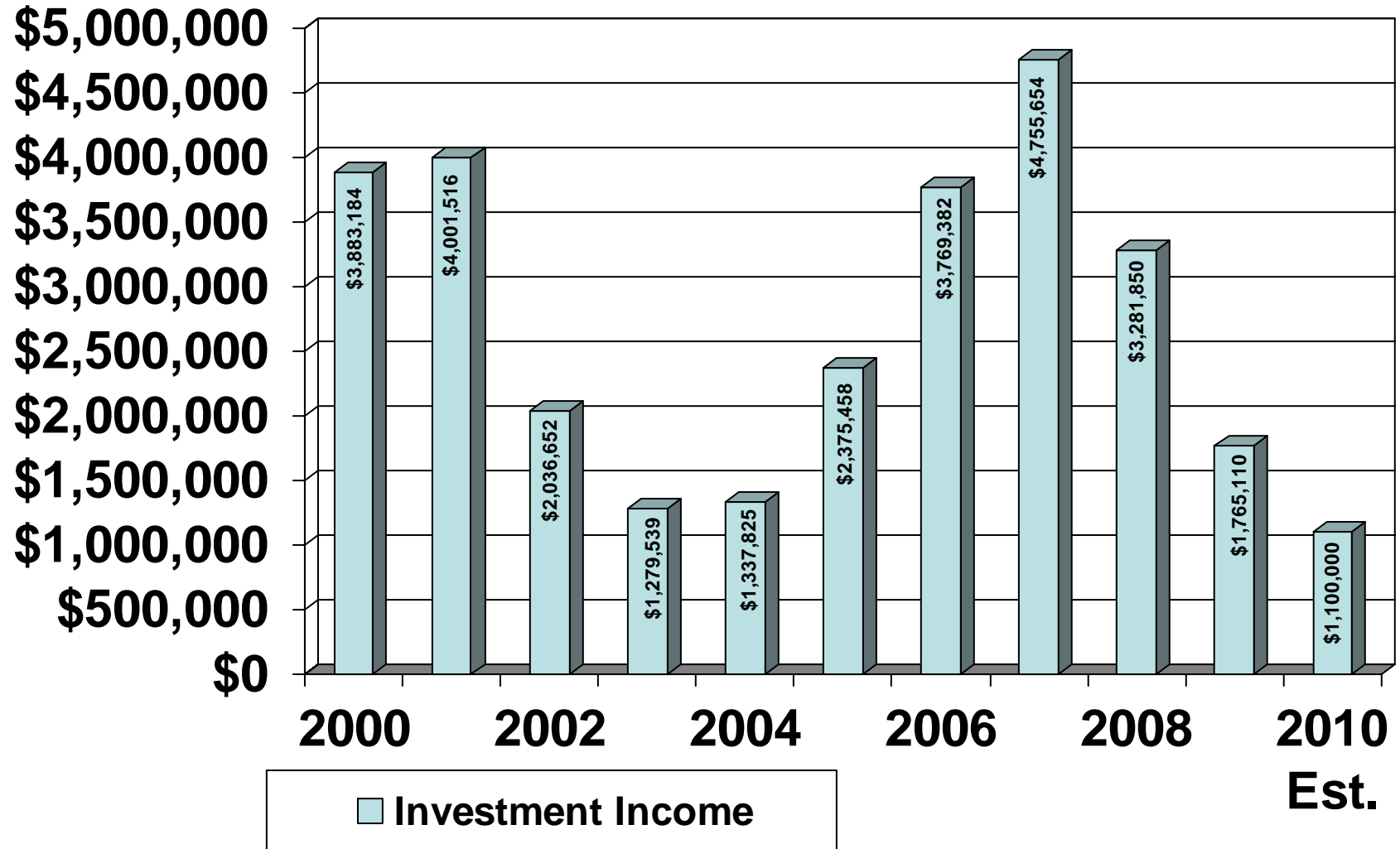
# Real Property Transfer Tax



# Local Government Funds

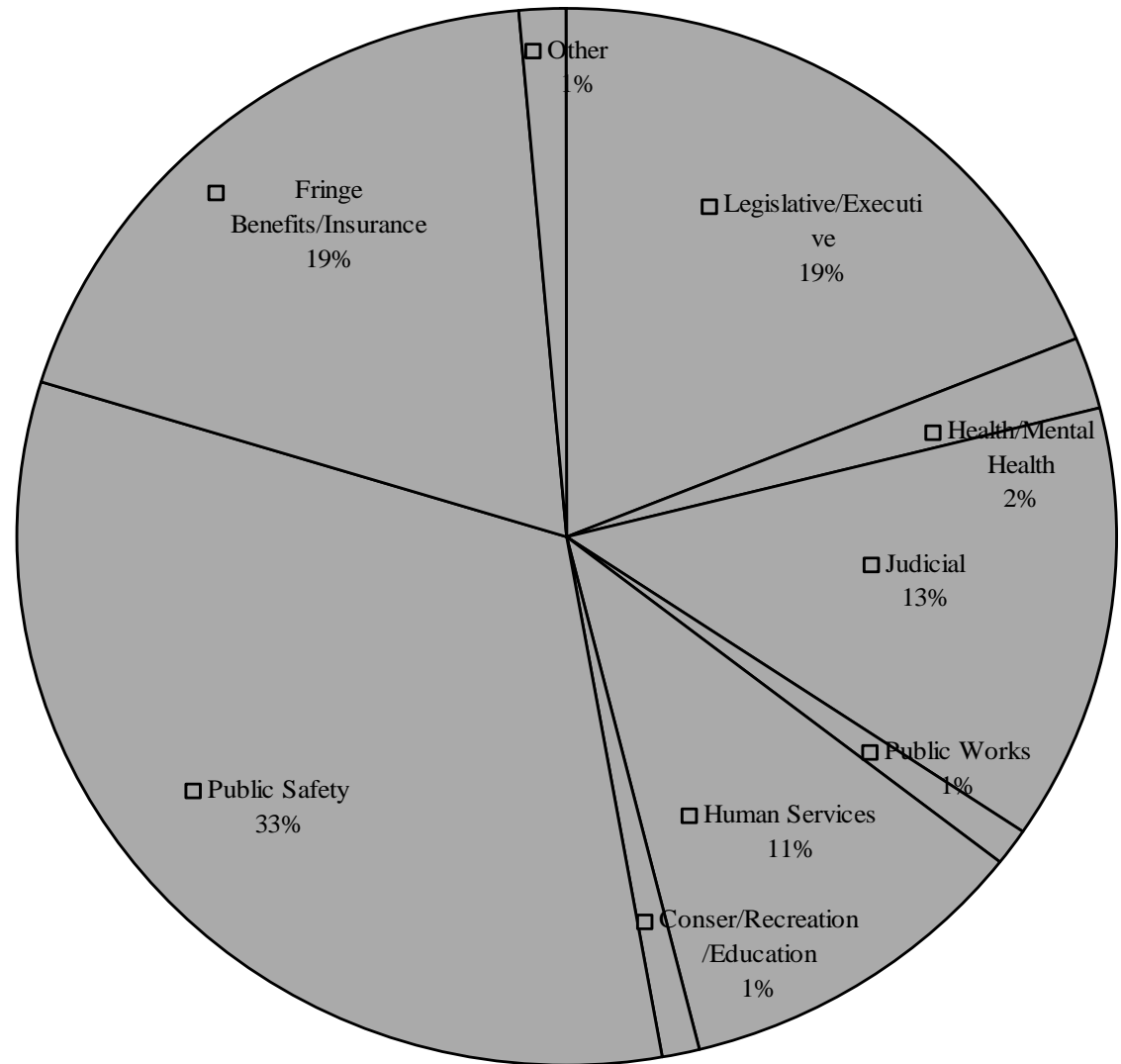


# Investment Income



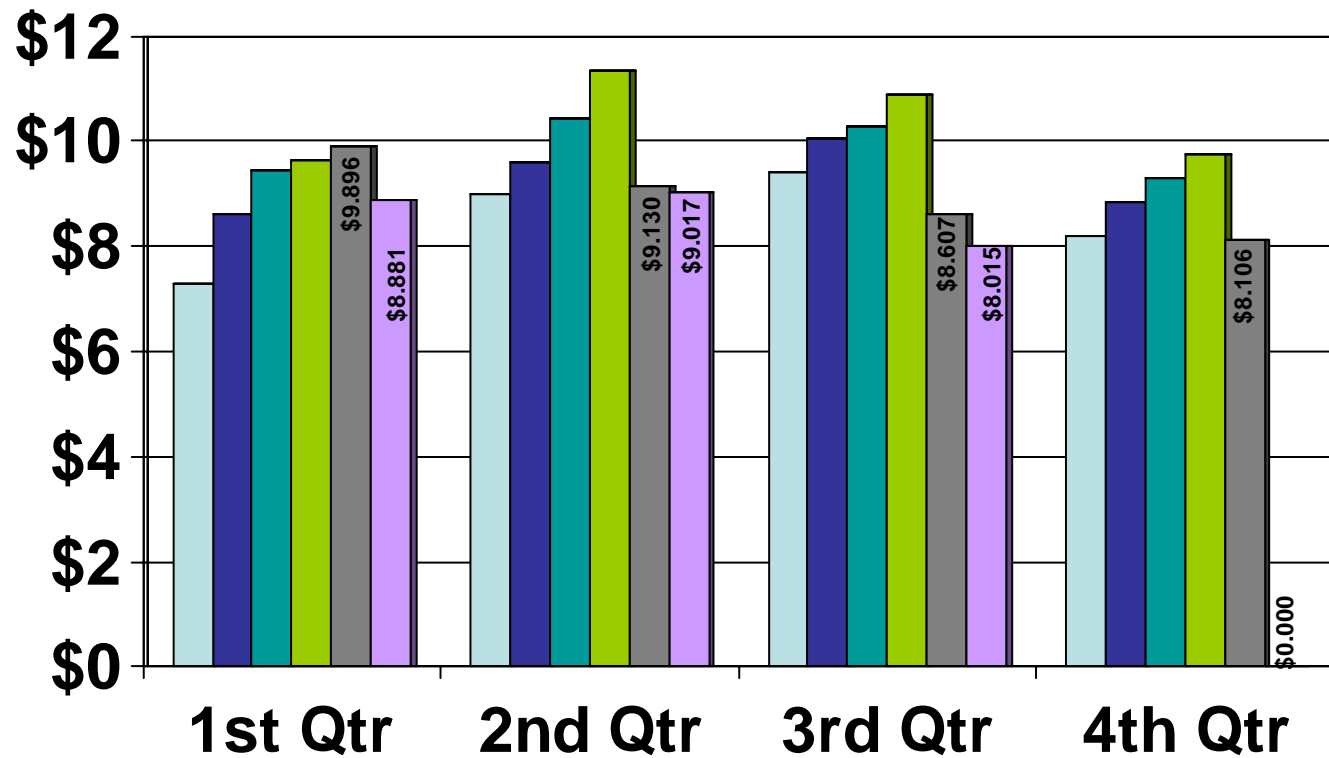
# 2009 EXPENSES

	2009 Expenses
Legislative/Executive	\$6,797,155
Health/Mental Health	\$737,048
Judicial	\$4,812,083
Public Works	\$384,187
Conser/Recreation/Education	\$385,237
Human Services	\$3,768,883
Public Safety	\$11,564,380
Fringe Benefits/Insurance	\$6,757,778
Other	\$532,862



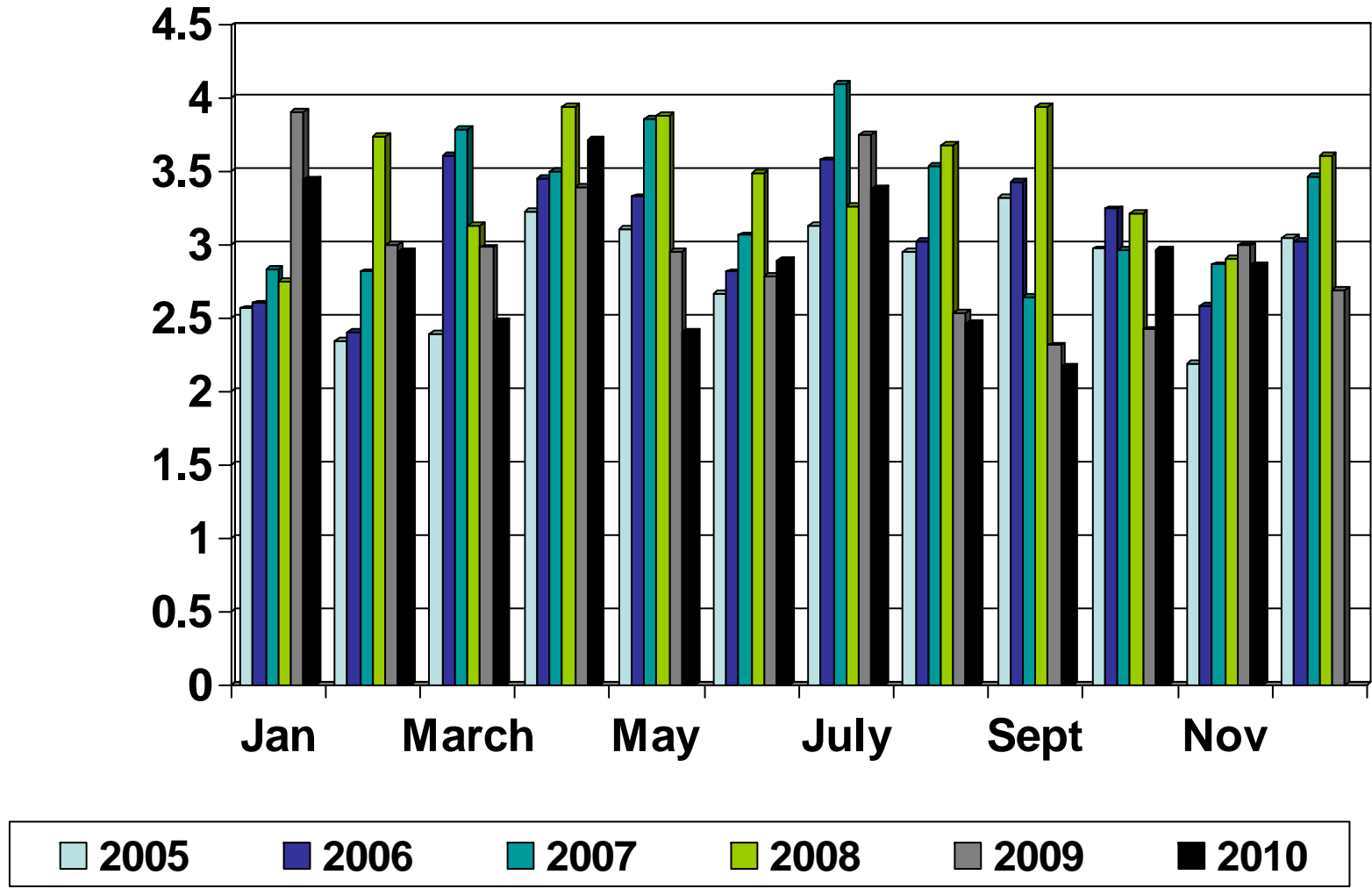
# QUARTERLY EXPENSES

Millions



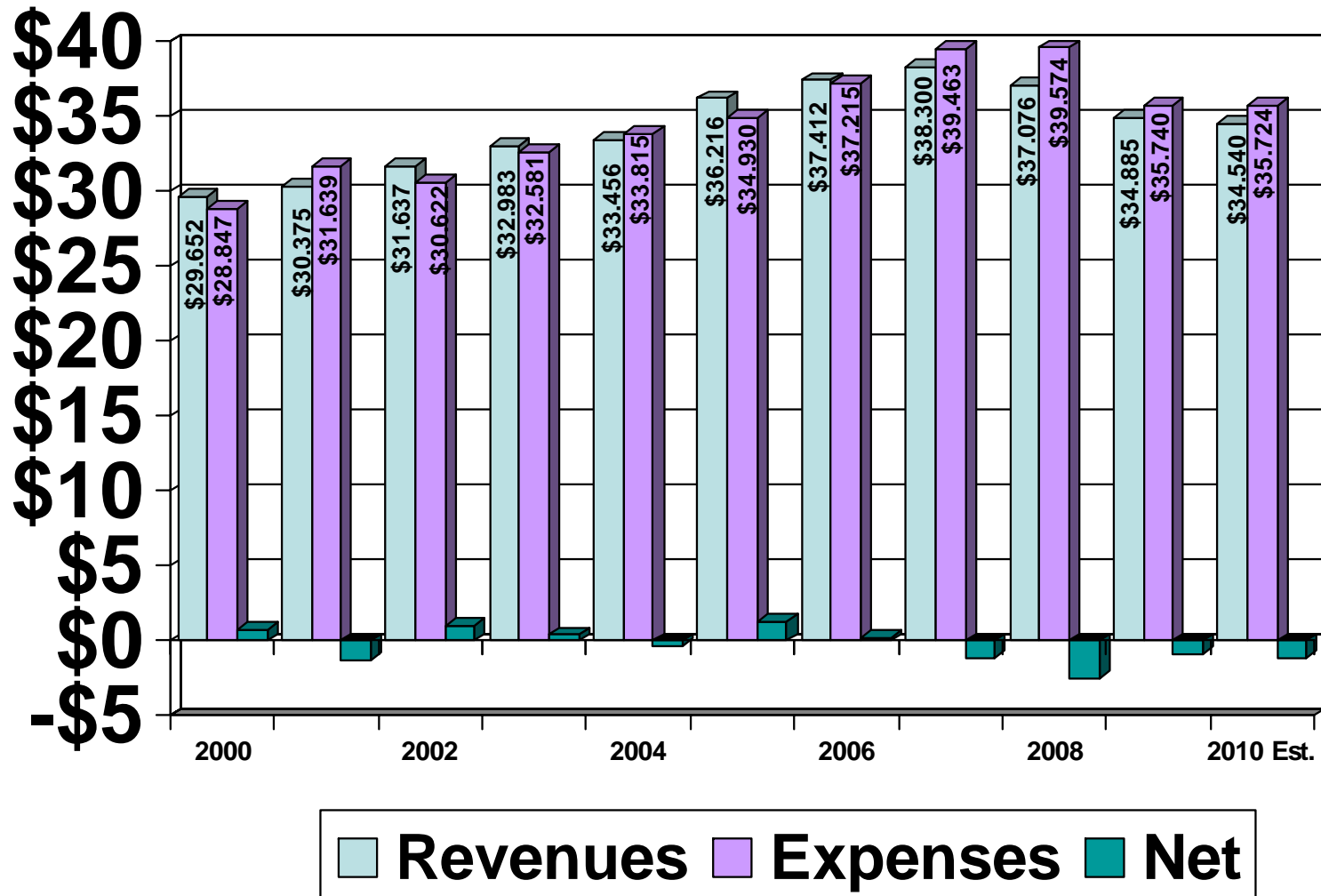
# 5 YEAR EXPENSE COMPARISON BY MONTH

Millions

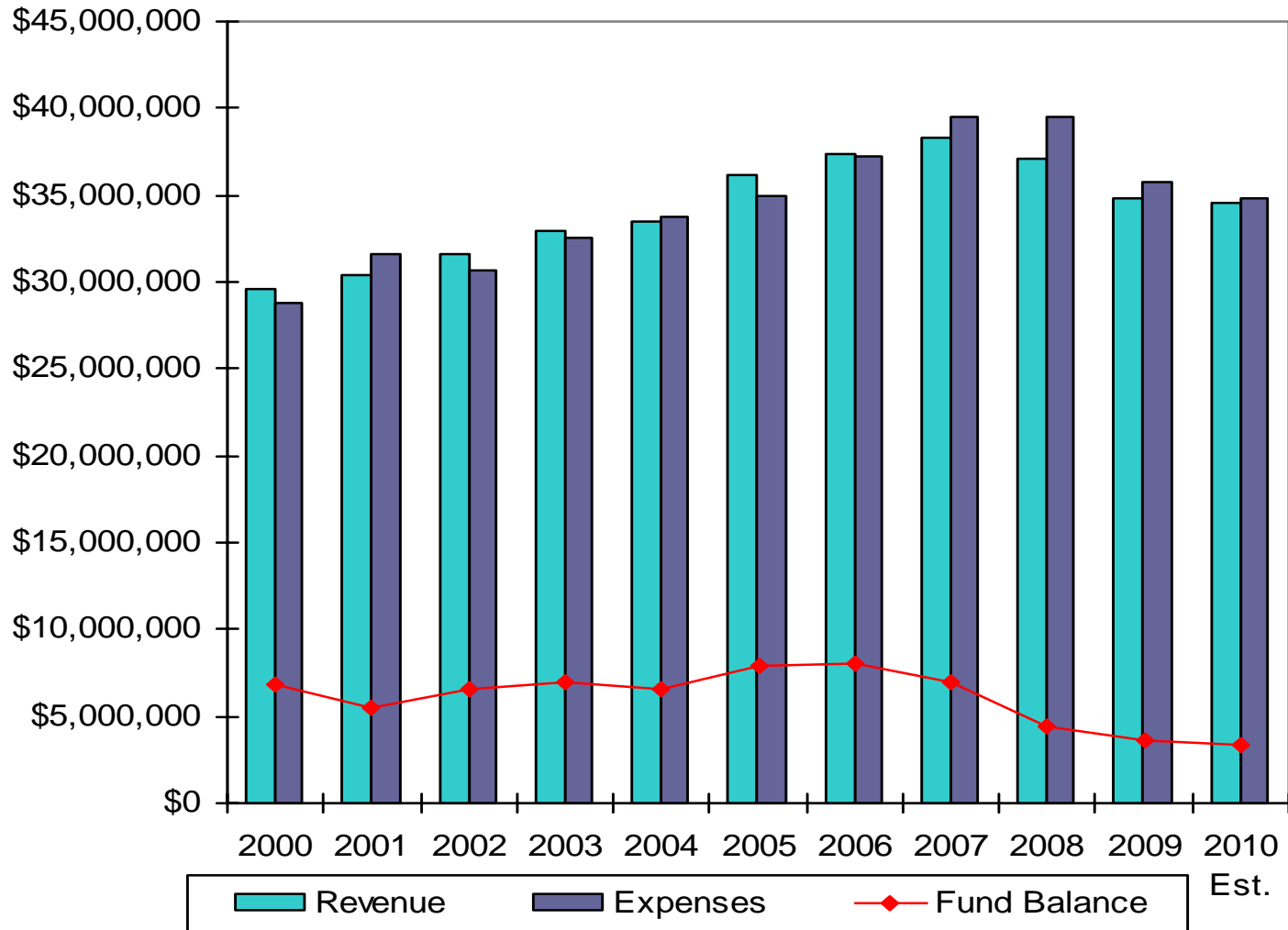


# Revenues vs. Expenses

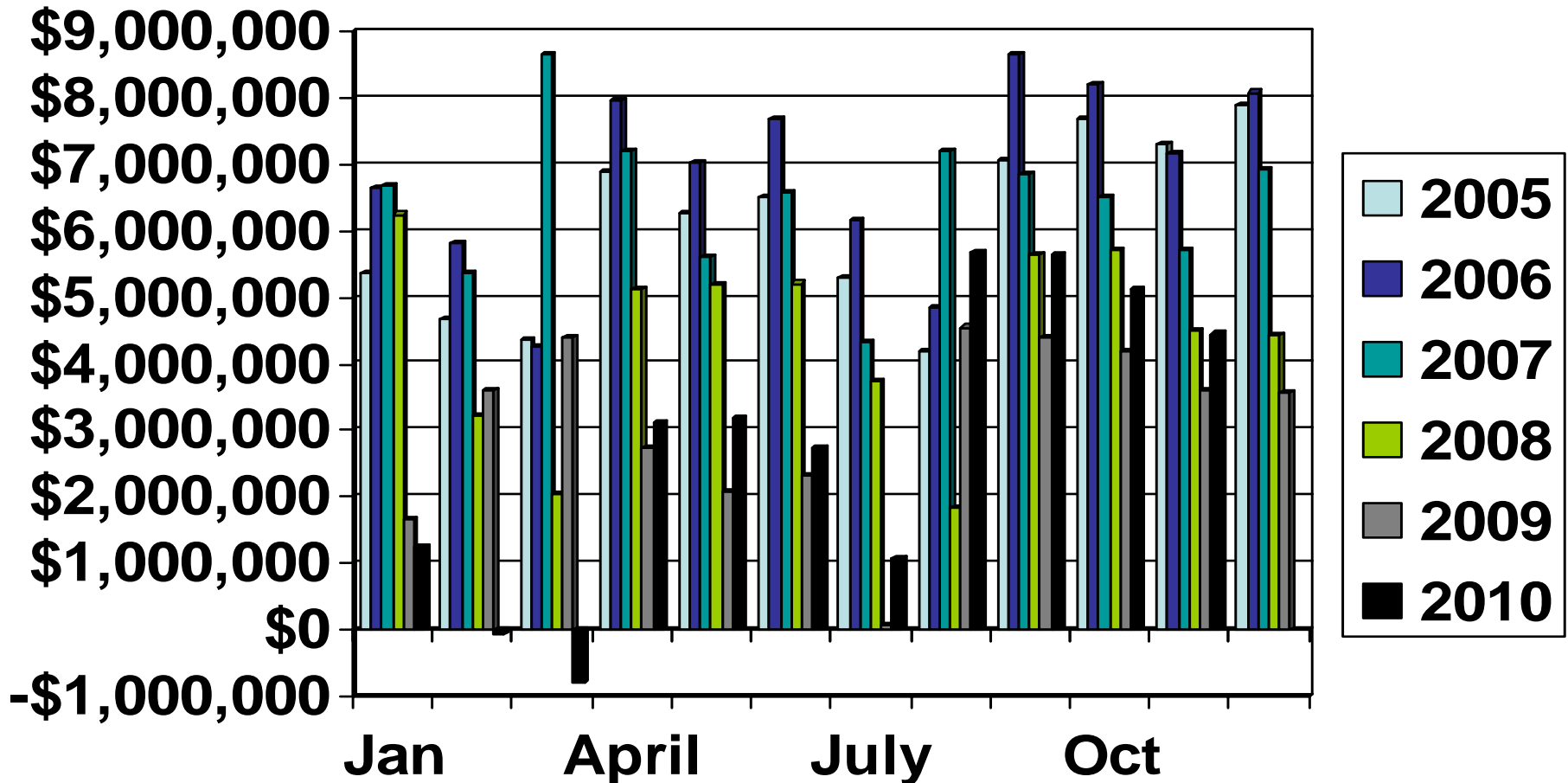
Millions



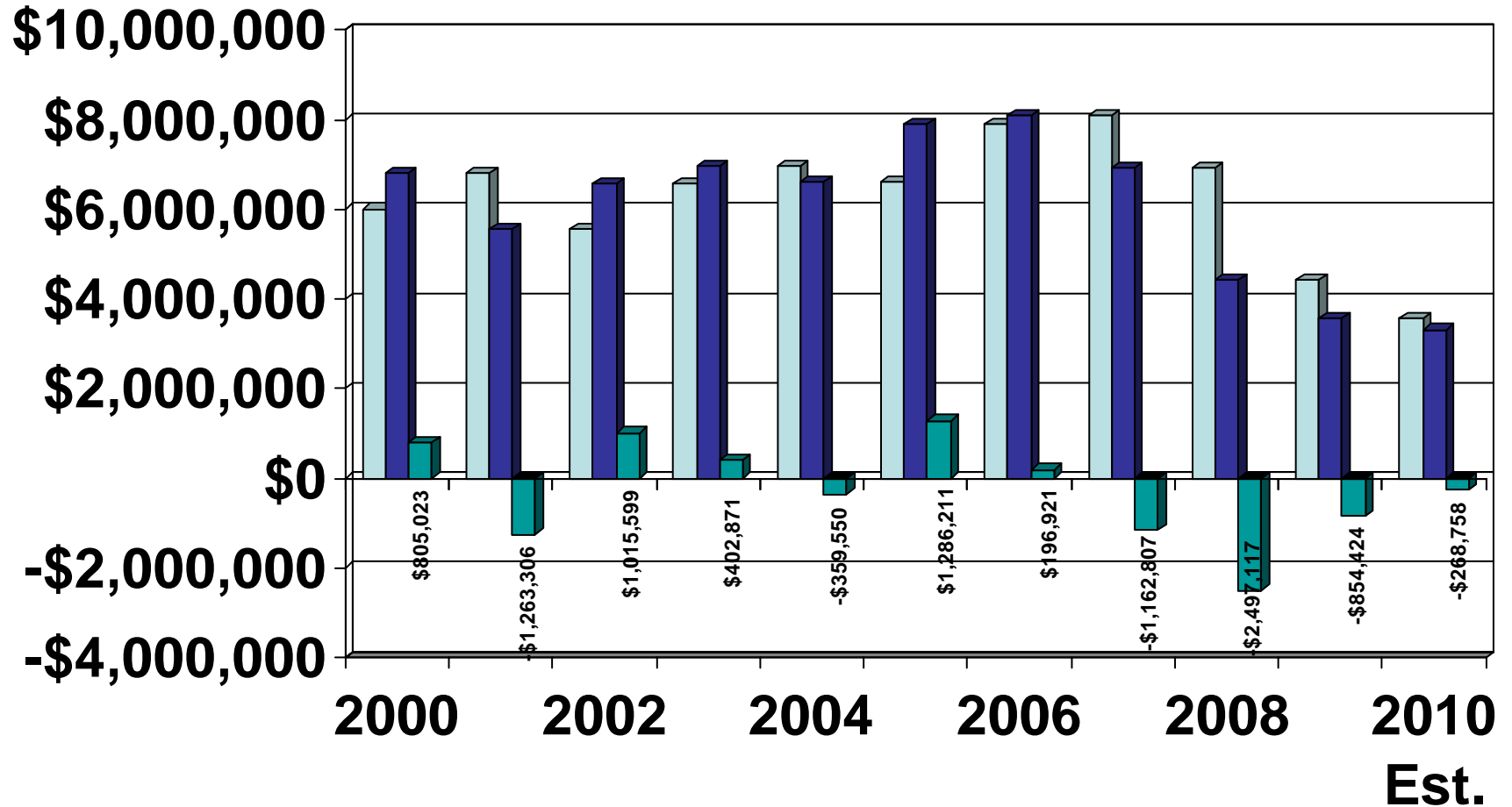
# REVENUES/EXPENSES/FUND BALANCE TRENDS



# 5 YEAR FUND BALANCE COMPARISON BY MONTH



# GENERAL FUND CASH BALANCE



Beginning Balance
  Ending Balance
  Net Gain/Loss