

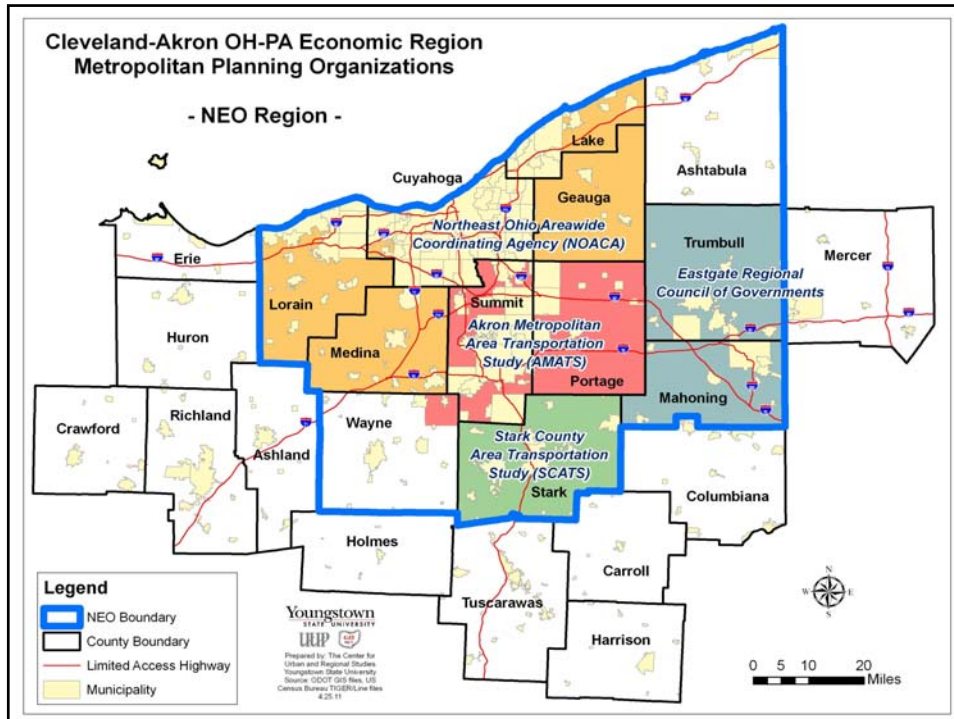
Northeast Ohio Sustainable Communities Consortium

NE Ohio-REGION 2050 PLAN AND PROCESS

By Stephen D. Hambley, PhD
Medina County Commissioner
June 24, 2011

WHAT ARE WE?

- In 2010 an organization of 23 public and private entities convened to develop a regional policy plan for a 12-county region in Northeast Ohio.
- Awarded a \$4.25 million federal grant from the US Department of Housing and Urban Development.
 - Received a matching program grant of \$500,000 from the Fund for our Economic Future, itself a consortium of Northeast Ohio foundations.
 - Consortium members have pledged a further \$2.045 million in In-Kind Match in the form of staff time and operating expense contributions.

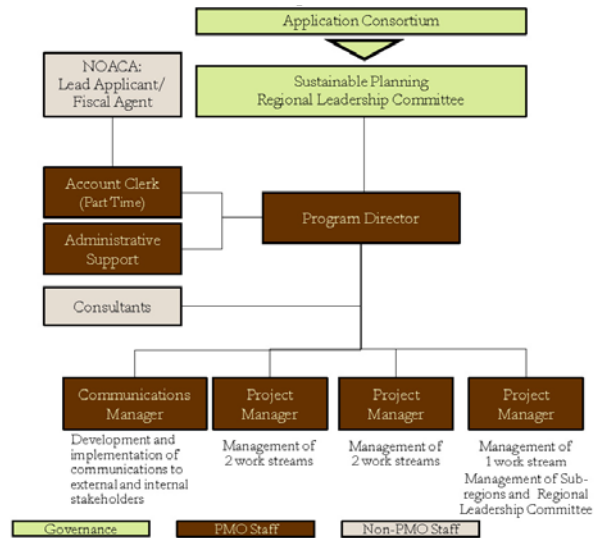


SUSTAINABLE DEVELOPMENT DEFINED

- By definition, development is sustainable if it meets the needs of the present without compromising the ability of future generations to meet their own needs.
- Sustainable development in action aims to satisfy three guiding principles: **economic prosperity, ecological integrity, and community livability.**
- Truly sustainable actions are those that satisfy all three of these principles and enhance rather than deplete the long-term quality of life in our communities.

*from Building Sustainable Communities, January 2004,
Sustainable Development Series,
Northeastern Illinois Planning Commission and the Campaign for Sensible Growth*

NEOSCC Organizational Chart



Planning Partners

- **Federal:**
 - US Department of Housing and Urban Development
 - US Department of Transportation
 - US Environmental Protection Agency
- **NEO Region**
 - 4 MPOs (NOACA, AMATS, Eastgate, SCATS) and 1 COG (NEFCO)
 - Counties (6 out of 12)
 - Major Cities (5 of the largest)
 - Public Housing Authorities (three)
 - State Colleges and Universities (two)
 - Fund for Our Economic Future
 - Regional Prosperity Initiative
 - Citizen and NGO Representatives
 - Public Transit Authorities (largest)
 - MetroPark Systems (largest)

A Simple Economic Development Plan for NE Ohio?

Copyright 2002 by Randy Glasbergen. www.glasbergen.com



“...and *that’s* why you need to raise my allowance!”

Status of NE Ohio?

Genuine Progress Indicator

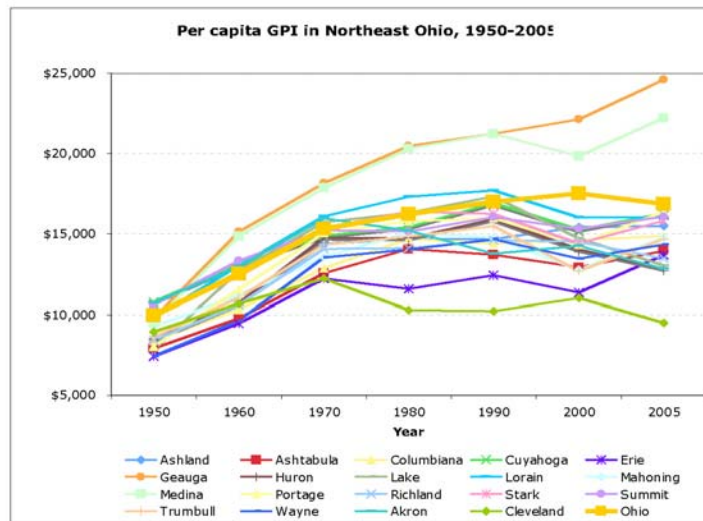
“The Genuine Progress Indicator as an economic and well-being indicator for Ohio: A summary”

Table 1. Factors incorporated into the Genuine Progress Indicator

Economic variables	Social variables	Environmental variables
Personal consumption per capita	Cost of crime	Cost of water pollution
Income distribution	Cost of family breakdown	Cost of air pollution
Consumption adj. for income inequality	Loss of leisure time	Cost of noise pollution
Value of household labor	Cost of underemployment	Loss of wetlands
Value of volunteer work	Cost of consumer durables	Loss of farmland
Services of household capital	Cost of commuting	Depletion of nonrenewable resources
Services of highways and streets	Cost of household pollution abatement	Long-term environmental damage
Net capital investment	Cost of automobile accidents	Cost of ozone depletion
Net foreign lending and borrowing		Loss of forest cover

- Bagstad, K.J. and M.R. Shammin. The Genuine Progress Indicator as a measure of regional economic welfare: A case study for Northeast Ohio. Gund Institute for Ecological Economic, University of Vermont. Manuscript in preparation for *Ecological Economics*. Partnership with Green City Blue Lake, Cleveland, Ohio.

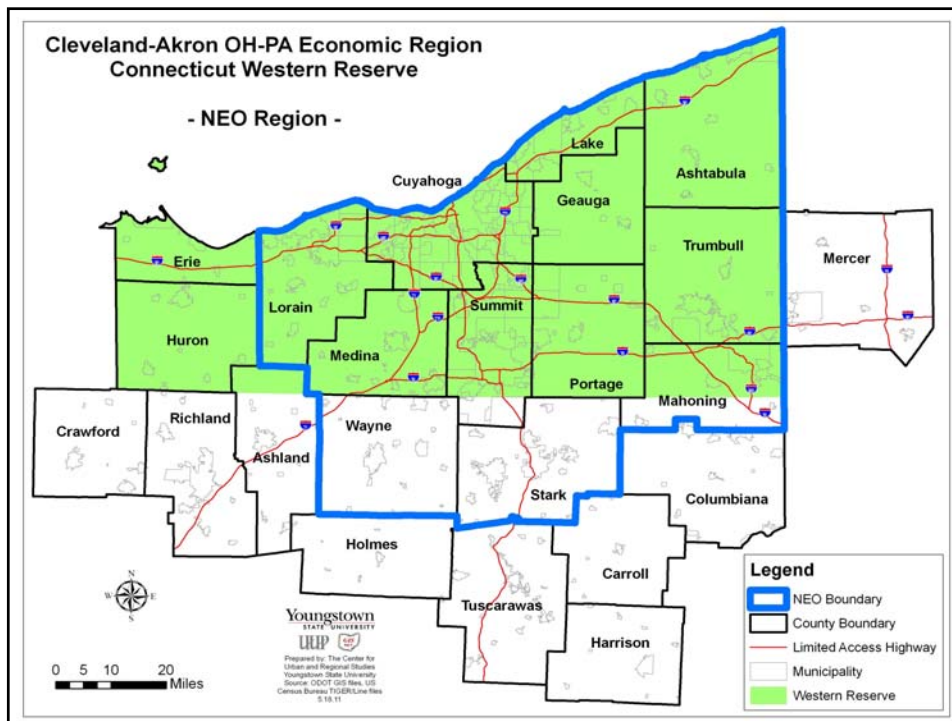
Genuine Progress Indicator

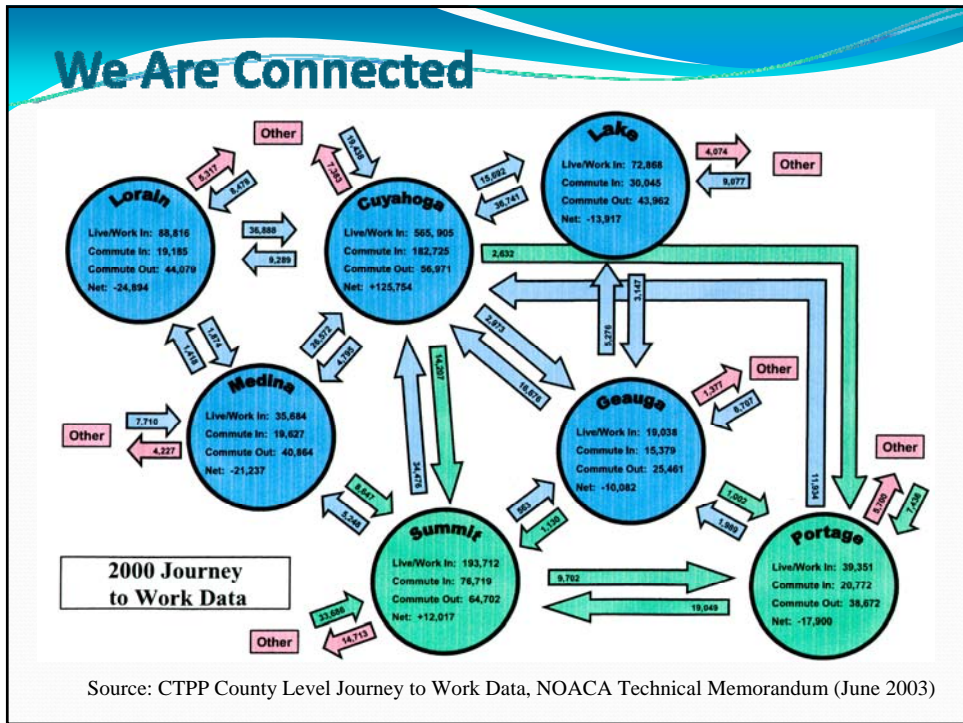
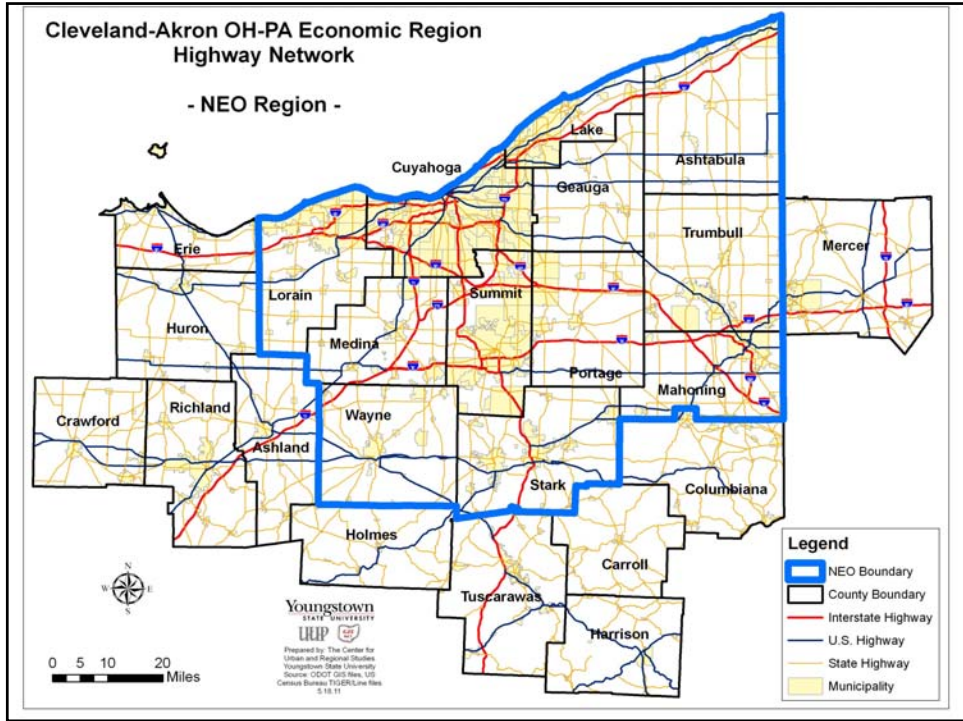


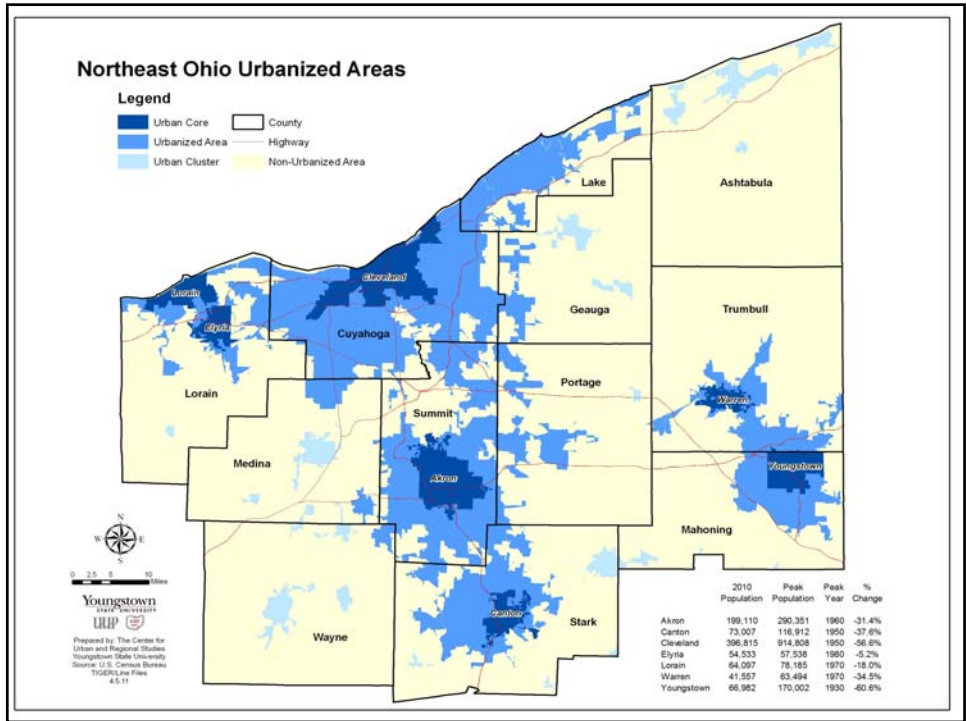
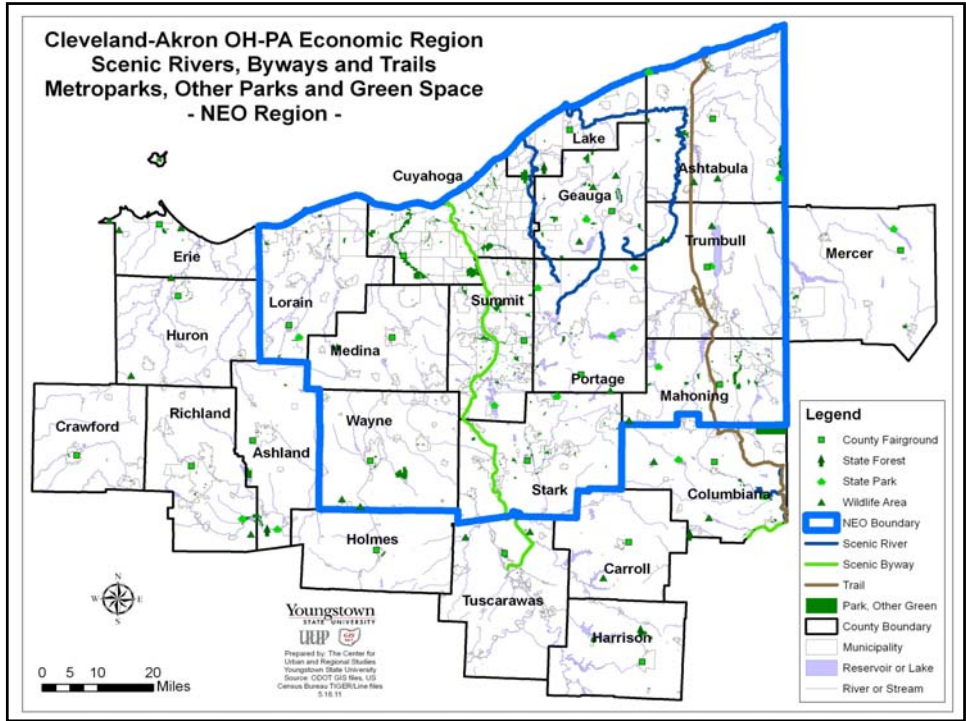
Per capita GPI in Ohio, Akron and Cleveland, and 17 Northeast Ohio counties, 1950-2005

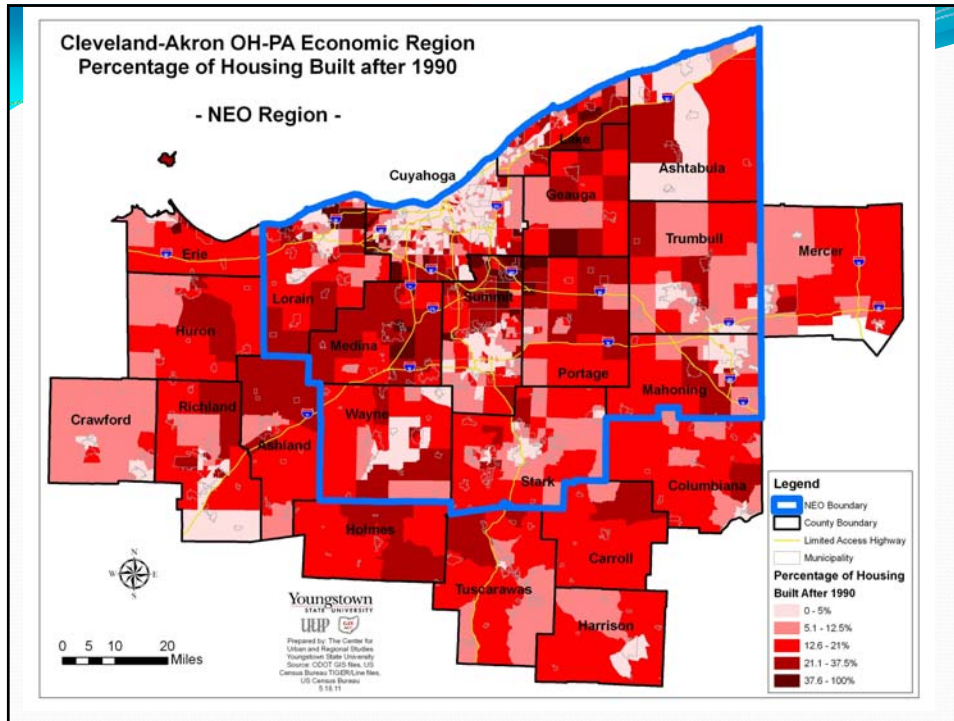
Problems Identified:

- Stable regional population, i.e., no growth
- Insignificant immigration of new households
- 60+ year shift away from labor-intensive industrial production & working class neighborhoods
- Exurban low-density “sprawl” development: Post War American Dream
- Shrinking core cities
- Low quality & deteriorating housing plagues older cities
- Regional cultural and natural resources under stress
- Chronic, structural fiscal difficulties at all levels of local and regional government
- Transportation alternatives are disconnected & Insufficient









“When you come to a fork in the road....Take it.” - Yogi Berra



TIME FOR
NE OHIO TO
PLAN FOR A
SUSTAINABLE
FUTURE

THE UNANSWERED QUESTION:

What is “sustainable development” in the fiscally constrained, chronically low-growth environment of Northeast Ohio?

OUTCOMES/DELIVERABLES (Work Streams)

- Built Environments and Natural Systems Integration
- Regional Mobility, *Logistics* and Transportation Options
- Housing Equity, Access, Quality and Choice
- Community-Focused *and Regional* Economic Development
- Place-Based Community Design

REGIONAL RESOURCES

- EXISTING NE Ohio INSTITUTIONAL NETWORKS
- EXISTING NE Ohio COMMUNICATIONS NETWORKS
- EXISTING NE Ohio ACADEMIC RESOURCES
- OTHER NE Ohio RESEARCH RESOURCES

CREATING THE REGIONAL CAPACITY TO PLAN

- **Strategy:** “Work Smarter with What You Have” by enabling the collaborative use of limited community resources to maximize the efficiency and effectiveness of public and private development decisions.
- **Framework:** “Network of Networks” promoting interconnectivity of information and analysis
- **Platform:** NEO-MPOs and COGs Collaborative: AMATS, Eastgate, NEFCO, NOACA and SCATS
- **Broad Goal:** Promote equity, environmental quality, and economic prosperity in communities throughout the NEO region.
- **Data/GIS Strategy:** Enable interconnectivity of NEO Region GIS systems to encourage coordination of economic/demographic analysis to minimize the Zero Sum game.

CREATING THE REGIONAL CAPACITY TO PLAN

- **Scenarios:** Demonstrate the long-term (10-40 year) land development impacts:
 - continued development patterns (with and without population growth)
 - compact development patterns (with and without population growth)
- **Outcomes:**
 - **Community capacity** enabling NEO to become more globally competitive, nationally attractive and socially equitable
 - **Institutional capacity** enabling MPOs and other critical actors to make better decisions
 - **Collaborative capacity** enabling local communities to develop collaborative solutions to the challenges they face.
 - **Intellectual capacity** enabling NEO universities and intermediaries to provide better research and a deeper bench of young professional talent.

The Process is Everything

“In all political societies, different interests and parties arise out of the nature of things, and the great art of politicians lies in making them checks and balances to each other.”

James Madison

National Gazette,
January 23, 1792

Critical Characteristics

- Transparency –“Sunshine” standards
- Democratic Process
- Balance of Interests
- Committed and Engaged Participants
 - “Committed to foster the attributes of cooperation, generosity, civility and honesty.”
- Collective Vision
 - Benefits from cooperation & collaboration greatly exceed the individual efforts and resources they will expend
- No predetermined conclusions

WHAT'S NEXT

- Expanding NEOSCC membership by inviting the participation of remaining counties, county seats or largest cities, and state colleges and universities; two additional MHAs (Lorain and Youngstown); the Greater Cleveland Regional Transit Authority on behalf of the region's transit systems; Cleveland Metroparks on behalf of the region's metropolitan, state and federal park systems; the Summit County Health District on behalf of the region's health districts and departments; two regional business alliances; the region's natural gas and investor-owned electric utility; and ten Community Representatives.

WHAT'S NEXT

- **Workstream Committees**
 - Economic Base
 - Environment
 - Communities
 - Connections
- **Community Forums**
 - Metro Area Leadership Workshops
 - Metro Area Community Meetings
 - NEO-Region 2050 Public Summits